



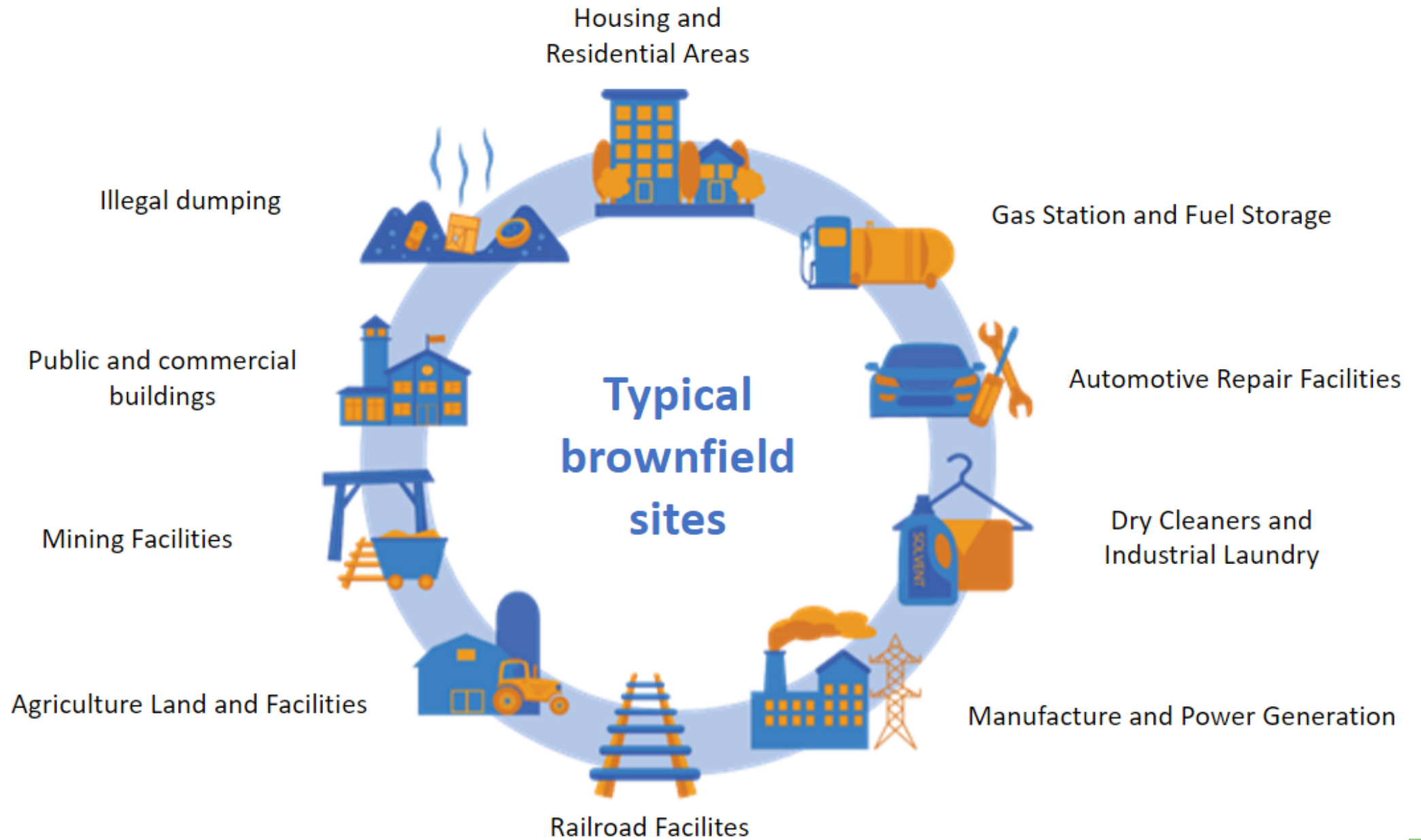
---

# U.S. EPA Brownfields Program

CFCC Spring 2026 Virtual Funding Fair



**A brownfield is real property where expansion, redevelopment or reuse may be complicated by the presence or potential presence of a hazardous substance, pollutant or contaminant.**



# Brownfield Possibilities:

**Provide housing, parks & open space, mitigate extreme weather,  
Improve public health, create jobs**

*Create Clean, Safe Places for Residents to Live, Work and Play*



Abandoned Gas Station



EV Charger and Welcome Center

# Land revitalization makes community goals a reality

## Housing

- Affordable or market-rate housing
- Workforce or senior housing

## Mixed-use development

- Infill/transit-oriented development
- Commercial corridors

## Green space

- City parks
- Recreation

**Transit, medical facilities, renewable energy projects, libraries, art centers, town halls... endless possibilities!**



# Targeted Brownfields Assessment (TBA)



A targeted brownfields assessment (TBA) is free technical assistance conducted by an EPA contractor on behalf of an eligible entity. Services include **site assessments, cleanup options report and cost estimates, and site fact sheets.**

Available: rolling basis; contact EPA Region 9



# EPA Brownfields Grants

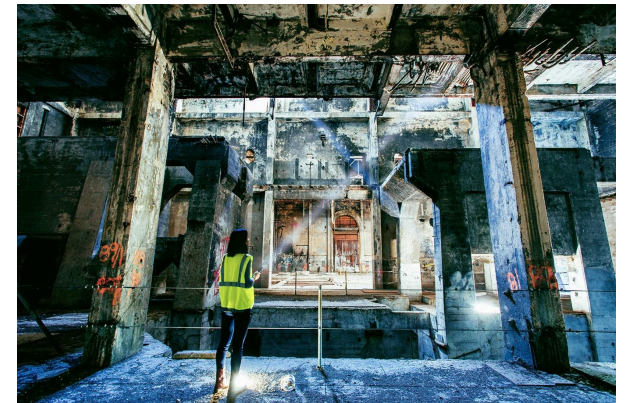


Entities eligible for EPA Brownfields funding:

- States
- Tribes
- Local units of government (e.g. cities, counties, school districts)
- Regional governmental entities (e.g. regional development authorities, metropolitan planning organizations)
- Nonprofits – 501(c)(3)

# EPA Brownfields Grants: Assessment

- **Community-Wide Assessment Grants and Assessment Coalition Grants**
- Support environmental site assessments (Phase I and Phase II ESAs), development of site inventories, reuse planning, cleanup planning and community engagement.
- Examples of eligible reuse planning activities include:
  - Market study
  - Infrastructure evaluation
  - Conceptual site design and reuse visioning
  - Resource roadmap
  - Land use assessment
- Ideal for communities that want to **understand their sites** and **set priorities for redevelopment.**



# EPA Brownfields Grants: Cleanup

- Funds the cleanup of hazardous substances or petroleum at sites **owned by the applicant**
- Other eligible activities include:
  - Cleanup planning
  - Community involvement
  - Voluntary oversight fees
  - Establishing engineering/institutional controls
- Requires a completed Phase II ESA and Analysis of Brownfields Cleanup Alternatives (ABCA)
- Best suited for **communities that are ready to move a property planning into action** (i.e., "Ready for Anticipated Use").



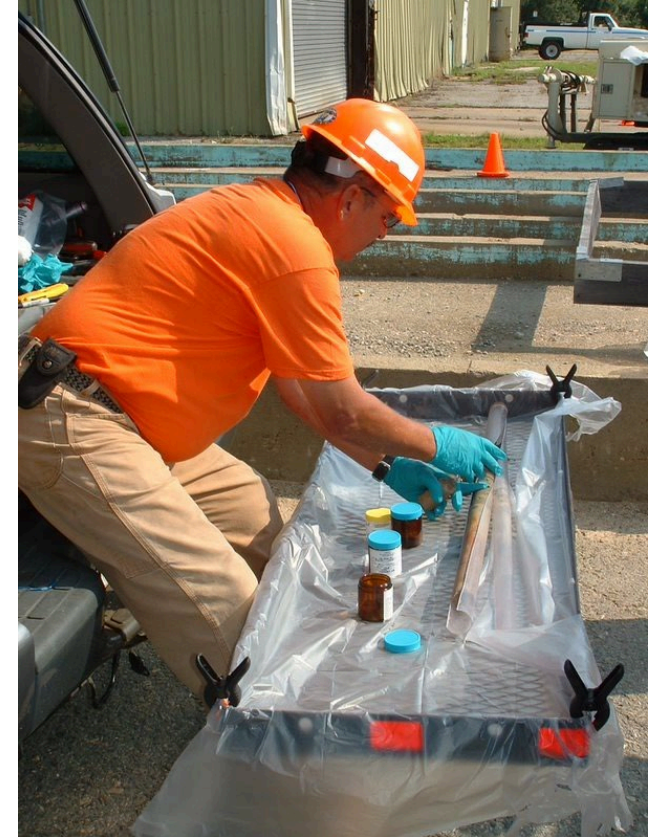
# EPA Brownfields Grants: Multipurpose

- Provides applicants flexibility of funds to conduct assessment, cleanup, and reuse planning.
- Communities can shift resource as project needs evolve.
- Best for communities with **clear redevelopment vision for a discrete target area** (e.g., downtown or waterfront district) **capacity to manage multiple stages** of the brownfields redevelopment process.



# EPA Brownfields Grants: Revolving Loan Fund

- Funding to capitalize a revolving loan fund program
  - Loans (at least 50%)
  - Subgrants
- Activities include site cleanup and loan fund management.
- Ideal for communities that have strong relationships with development entities, experience with or interest in marketing and executing loans, and an **intention to run an ongoing brownfields cleanup program** by “revolving” funding on new projects once loans are repaid.



# EPA resources can support land revitalization at every stage (until redevelopment)



Site  
Identification

Reuse  
Planning

Community  
Involvement

Site  
Assessment

Cleanup  
Planning

Cleanup

Re-  
development

# Connect with your **PARTNERS** in Land Reuse!

Scan this QR code to join EPA R9  
mailing list!

