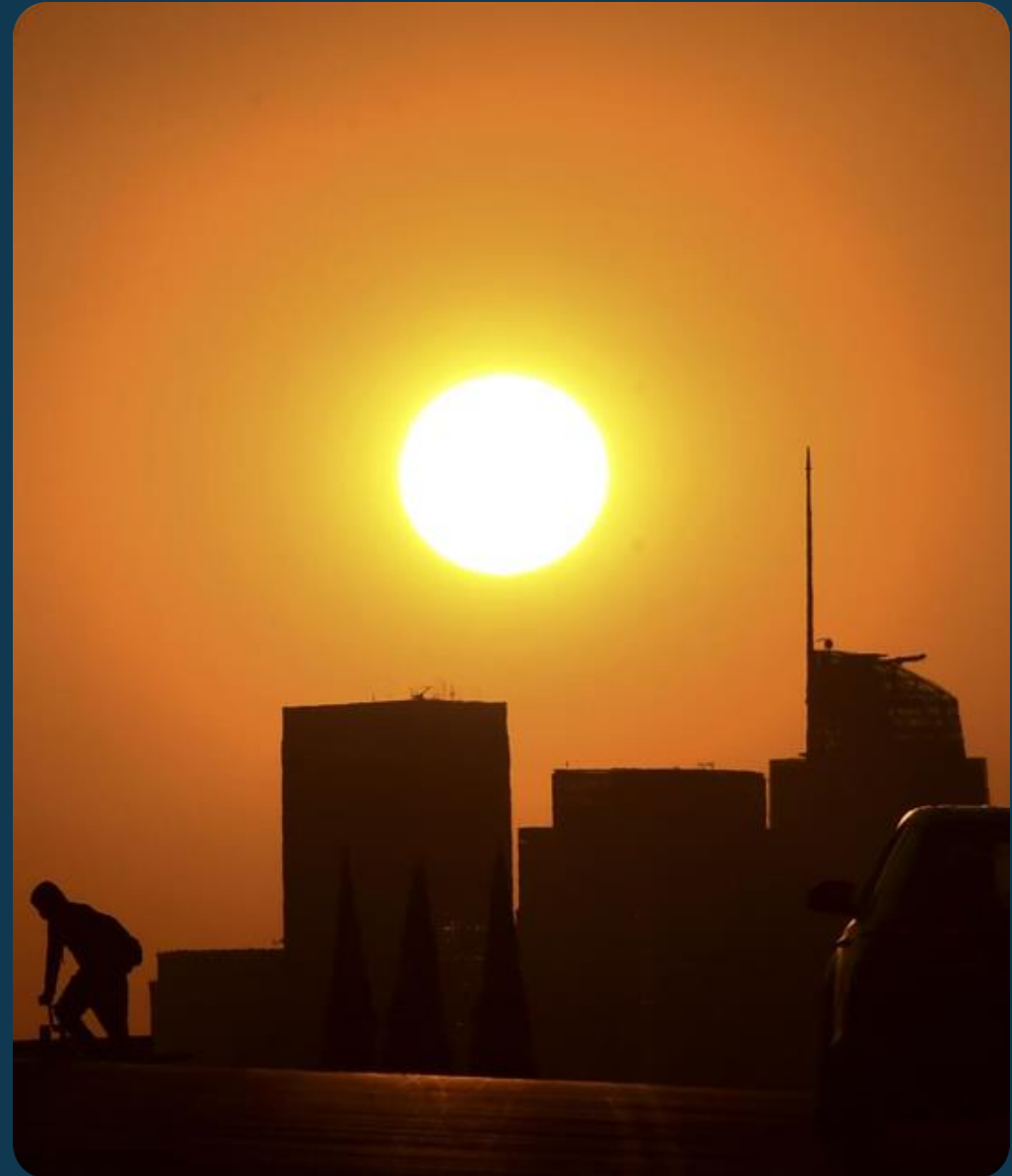


Extreme Heat and Community Resilience Program

Round 2 of Funding: Infrastructure for Extreme Heat



CA Governor's Office of
Land Use and
Climate Innovation



LCI's Role in Federal Grants

LCI does not award federal grants

BUT

LCI can help California-based groups:

- Find new federal grant opportunities
- Build capacity to apply for and manage federal grants via technical assistance and training
- Navigate the process of submitting notice of a federal grant application to the State

To learn more, email LCI's Federal Grant Administrator at federal.grants@lci.ca.gov



Agenda

1. Extreme Heat Program Background
2. Round 2 Overview
3. Resources and Contact



Round 2 Funding



27.5 Million USD Dollars



Greenhouse Gas Reduction Fund and Proposition 4



Infrastructure for Extreme Heat



1. Program Values

Harm Reduction

Urgency to reduce immediate heat-related illness and death.

Partnership

Recognizes that effective solutions require both community knowledge and institutional capacity.

Belonging

Ensures that infrastructure is designed with and for the people who use it.

Lasting Community Benefits

Investments should extend beyond immediate outputs to contribute to sustained change.



2. Project Types

Project Type	Early Infrastructure	Advanced Infrastructure
Purpose:	Focus on infrastructure planning, with pilots or demonstration infrastructure serving as key components to inform the final planning product	Focus on implementing infrastructure based on prior planning and must demonstrate that construction can be completed within the allotted grant time frame
Infrastructure Component:	Demonstrations to inform the final product.	Infrastructure that is ready or nearly ready for development
Example:	Development of a Cool Corridors Master Plan with shade structure demonstration project	Implementation of a Cool Corridor with Street Trees, Cool Pavements, and Shade Structures

3. Award Amounts

Total Funding Available: \$27.5 Million

Project Type	Project Amount	Infrastructure	Partnerships	Belonging
Early Infrastructure 30-month project	\$750,000 - \$1.2M	25 - 60% Demonstration Project	8% Minimum	4% Minimum
Advanced Infrastructure 48-month project	\$3M - \$4.5M	70% Minimum	6% Minimum	2% Minimum



Tentative: May change before Notice of Funding Availability release

*15% indirect cost

4. Eligible Projects

Built Environment Solutions	Nature-Based Solutions
<ul style="list-style-type: none">• Cool and reflective pavements• Cool roofs and walls• Shade for public spaces (e.g., bus stations, parks)• Passive and mechanical cooling• Microgrids and solar + battery storage• Cooling Centers	<ul style="list-style-type: none">• Canopy expansion• Green Surfaces• Green roofs and walls• Blue Spaces• Green Space Restoration• Indigenous Knowledge & Stewardship

Note: Above are examples and can be a combination of both types

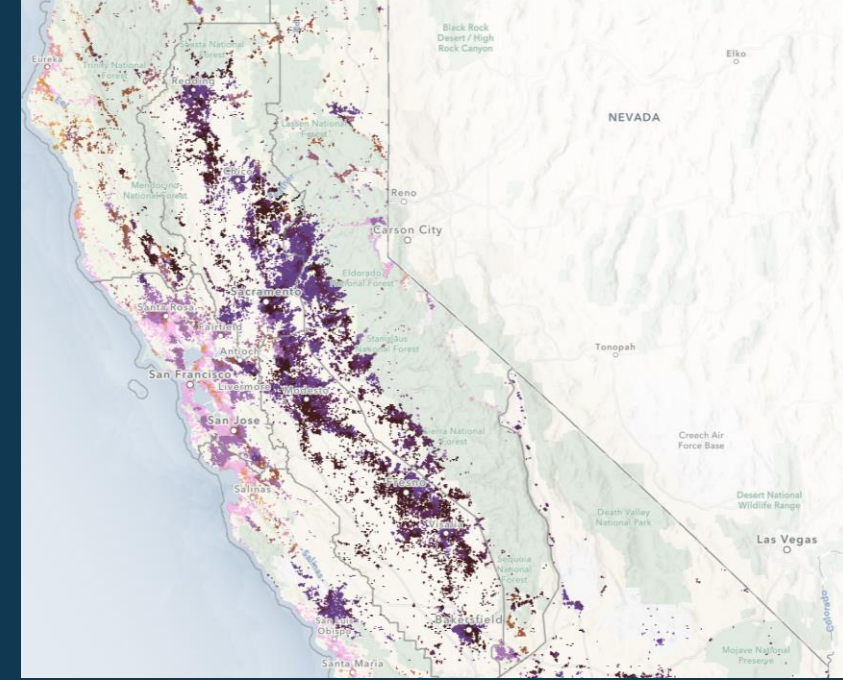
5. Funding Goals

2024 Climate Bond Requirements

- 40% for Disadvantaged Communities (DACs) and Vulnerable Populations
- 10% must benefit Severely Disadvantaged Communities (SDACs)

Vulnerable Population - Extreme Heat designations in the Vulnerable Community Platform

- High Climate Hazard & High Social Vulnerability
- Medium Climate Hazard & High Social Vulnerability
- High Climate Hazard & Medium Social Vulnerability

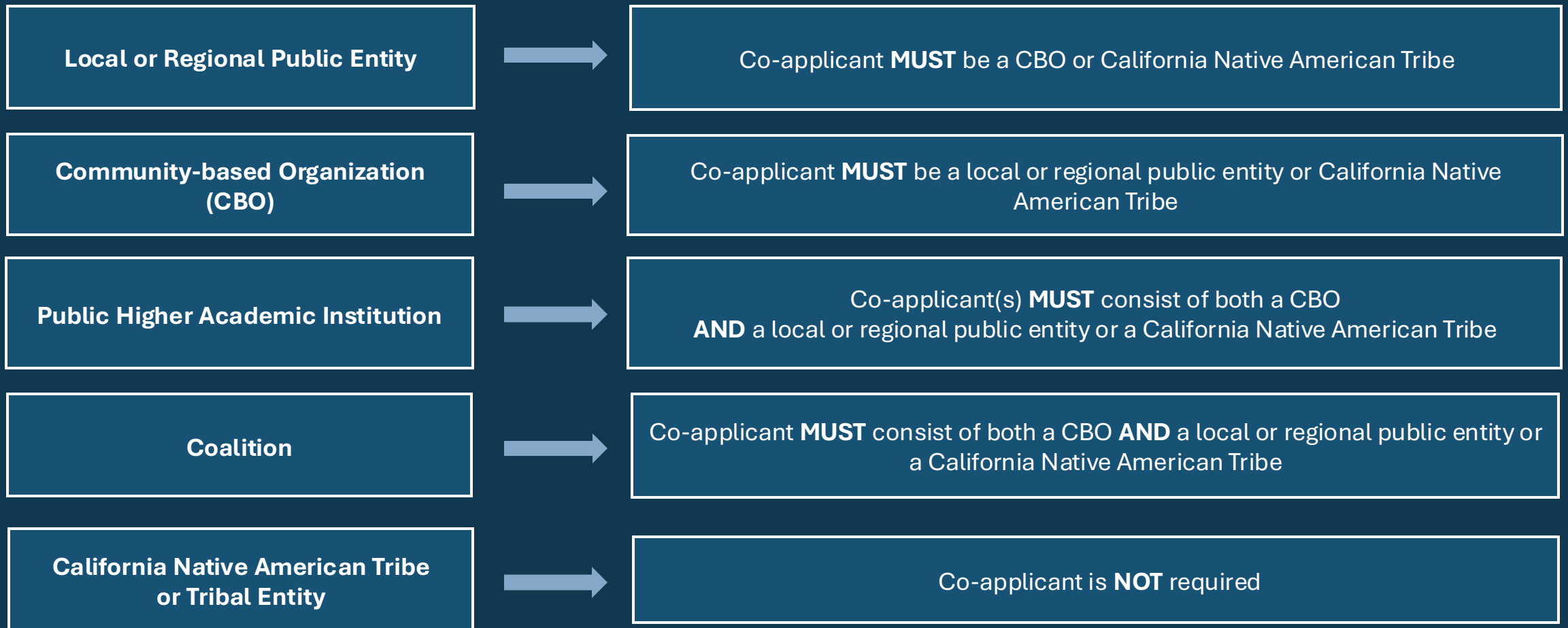


Stockton, CA Metro Area: Block Group 060770033063

Zoom to

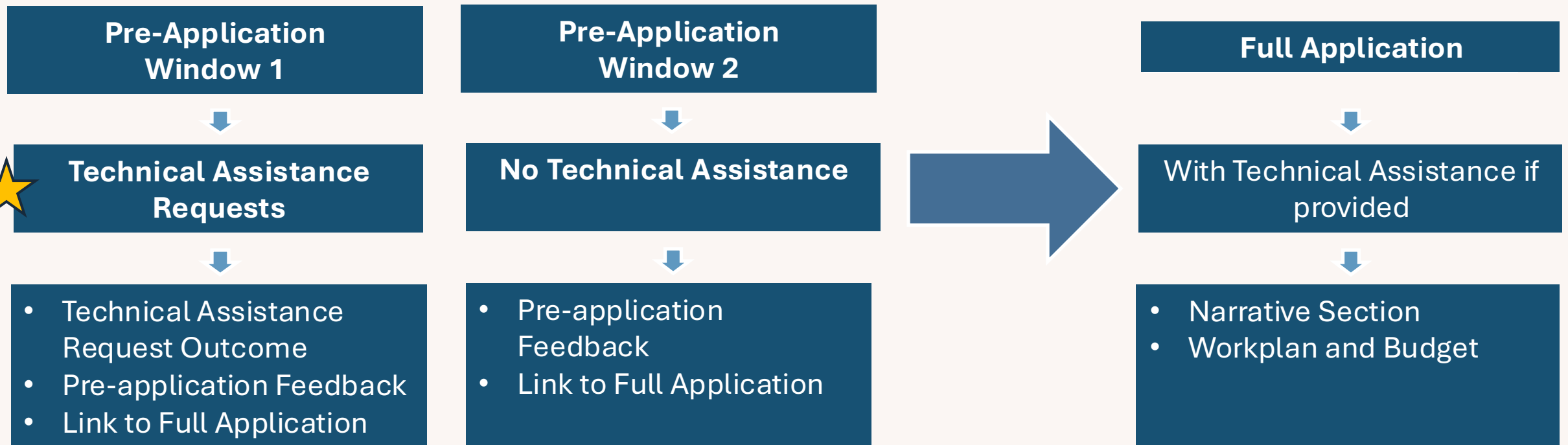
Hazard	Climate Now	Climate Future	Social
☀️ Extreme Heat	High	High	High
🌊 Sea Level Rise	NA	NA	NA
🌊 Flooding	Low	High	High
🌵 Drought	High	High	High

6. Applicants and Co-Applicants



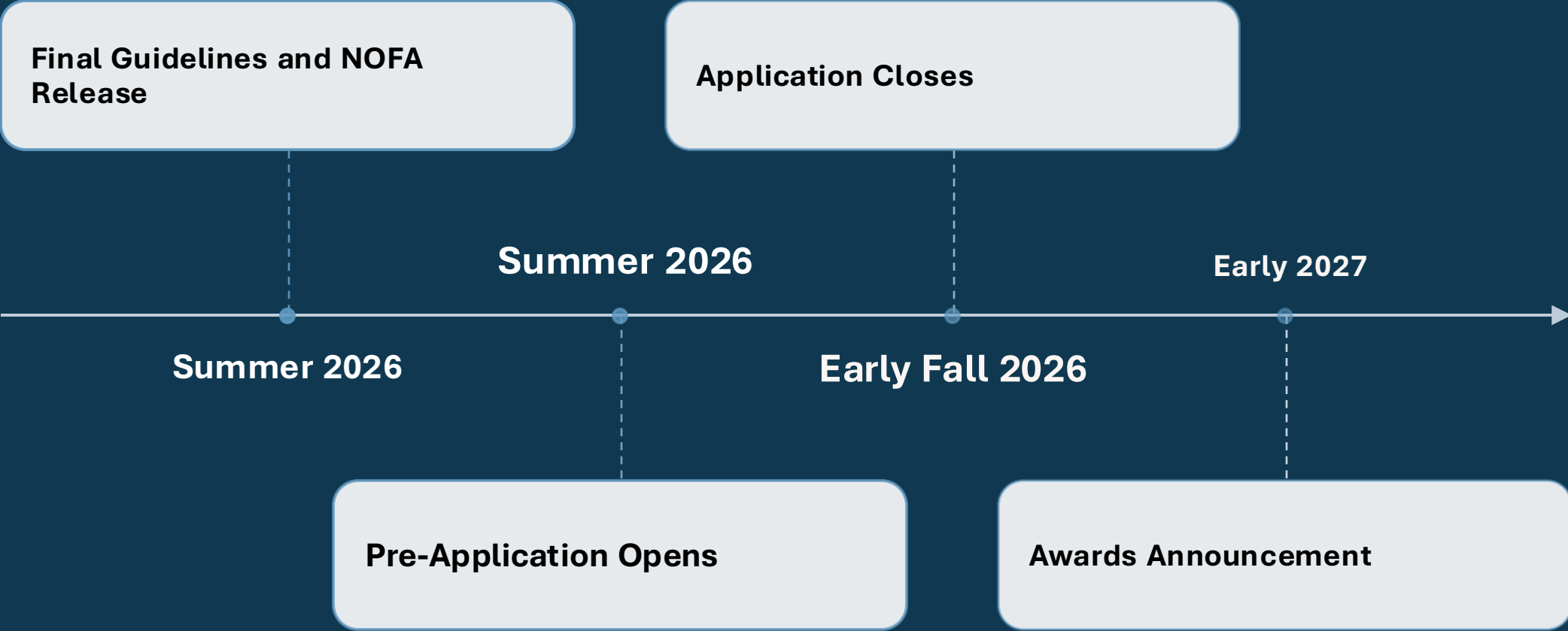
7. Application Process

Note: Applicants have the choice to apply through Pre-application Window 1 (seeking TA) OR Window 2 (without TA)



**Option to choose Pre-Application WITH or WITHOUT Technical Assistance*

8. Round 2 Timeline



Thank You!



Newsletter

STAY CONNECTED



@Cal_LCI



Extreme.Heat@lci.ca.gov



Governor's Office of Land
Use and Climate
Innovation (LCI)

