

BROWNFIELDS FY25 BROWNFIELDS GRANT OPPORTUNITIES

Pacific Southwest Region 9 Communities

Speaker Name	Agency
Brooklyn James	U.S. EPA, Region 9 Brownfields Program



EPA BROWNFIELDS PROGRAM



Brownfield: a property, the expansion, redevelopment, or reuse of which may be complicated by the **presence** or **potential presence** of a hazardous substance, pollutant, or contaminant.

Pre-Cleanup



Post-Cleanup



**Countless
reuse options!**





BEFORE: Auto Repair and Machine Shop



AFTER: Mixed-use Affordable Housing and Commercial Development

AFFORDABLE HOUSING



ENVIRONMENTALLY FRIENDLY TRANSPORTATION

RURAL AND TRIBAL HEALTH



COMMUNITY PARKS AND OPEN SPACE





RENEWABLE ENERGY

EPA BROWNFIELDS PROGRAM FY25 GRANT FUNDING OPPORTUNITIES



Assessment: allows for environmental assessment, planning, and community engagement from \$500K to \$2M

Cleanup: for remediation offered \$500K - \$4M

Revolving Loan Fund: for brownfields cleanup up to \$1M — supplemental funding over time



Applications Due:
November 14th

ELIGIBLE ENTITIES



States

Tribes

**Non-Profits
501(c)(3)**

**General Purpose
Unit of Local
Government**

Ex: City, county, school district,
local public authority, regional
gov entity, special district

**Qualified
Community
Development
Entity**

COMMUNITY-WIDE ASSESSMENT GRANTS



- **Activities:** Inventory, Phase I/II assessments, community outreach, cleanup and redevelopment planning
- **Length:** 4 years
- **Award Amount:**
 - Community-wide: \$500,000
 - Site-specific: not available
- **Match:** N/A



COMMUNITY-WIDE ASSESSMENT GRANTS: STATES AND TRIBES



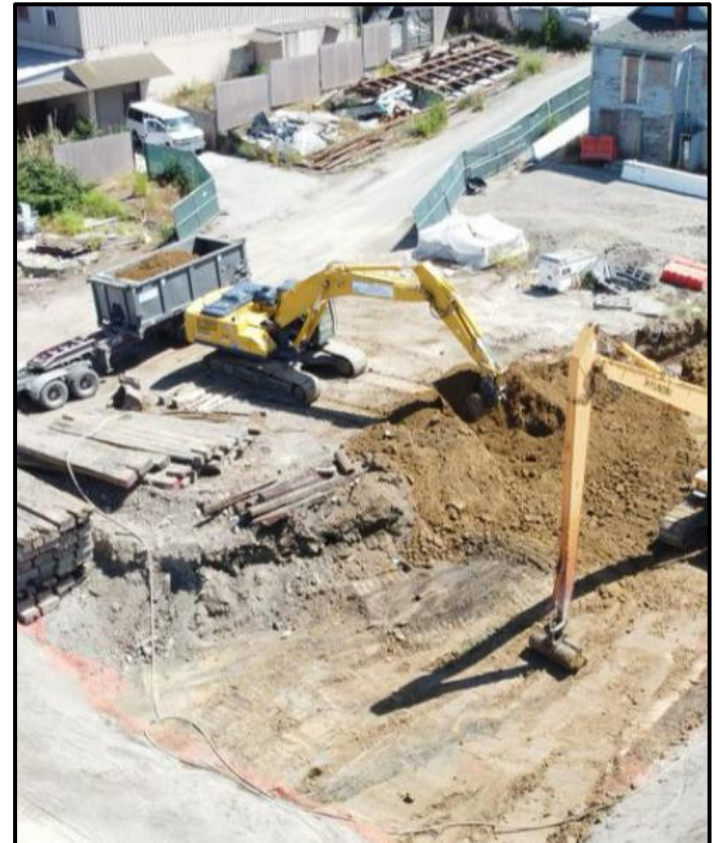
- **Activities:** Inventory, assessment, community outreach, cleanup and redevelopment planning geared towards states and tribes
- **Length:** 5 years
- **Award Amount:** Up to \$2M
- **Match:** N/A



ASSESSMENT COALITION GRANT



- **Activities:** Inventory, Phase I/II assessments, community outreach, cleanup and redevelopment planning
- **Requirement:** Must have 2-4 non-lead partners (one that has never had a MARC grant)
- **Eligible Entities:** Must be a state, tribe, regional council or a **group** of general-purpose units of local government
- **Length:** 4 years
- **Funding:** Up to \$1.2M
- **Match:** N/A



REDEVELOPMENT PLANNING



Redevelopment planning activities are eligible under Assessment Grants:

- Site Reuse Assessment and Visioning
- Market evaluation
- Infrastructure Evaluation
- Land Use Assessment
- Preliminary Site Design
- Site Disposition Strategy
- Development of area-wide plan
- Site Revitalization Planning
- Resource Roadmap/Capital Stacking



CLEANUP GRANTS



- **Activities:** Site cleanup, reuse planning, community involvement, regulatory oversight fees
- **Requirements**
 - Site ownership
 - Completed phase II or site investigation report
 - Community Notification
- **Funding:**
 - Up to \$500K
 - Up to \$2M
 - Up to \$4M
- **Length:** 4 years
- **Match:** N/A



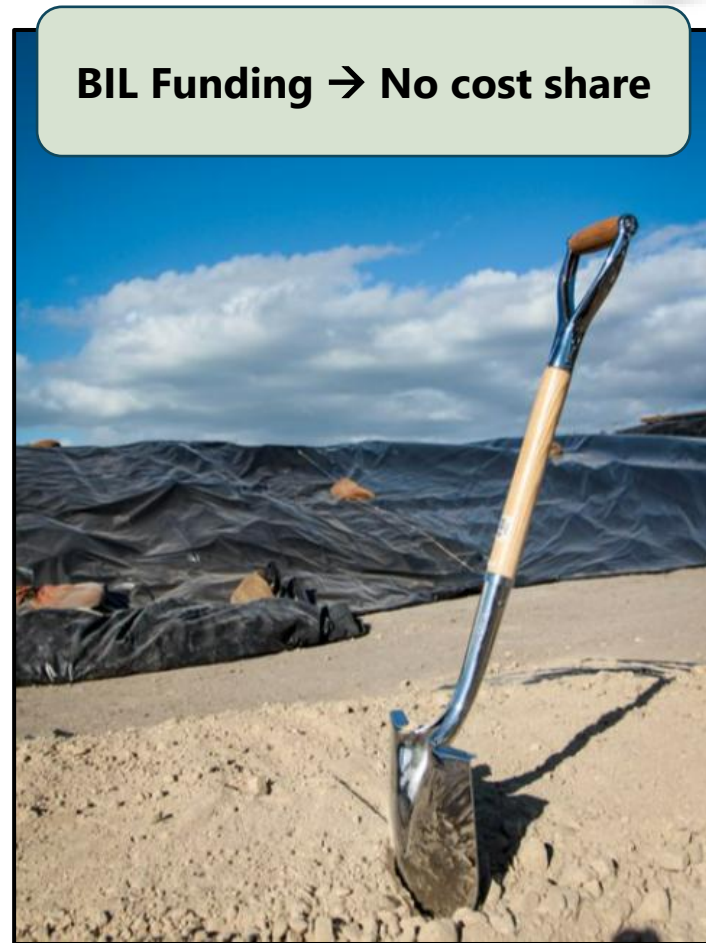
BIL Funding → No cost share

REVOLVING LOAN FUND (RLF) GRANT



- **Activities:** Loans and subgrants (\$500K limit per subgrant *) for site remediation; privately-held sites can be eligible for loans; more details [here](#). Recipients need to be able to effectively administer loans and manage program income
 - At least 50% of funding must go to loans
- **Funding:** Up to \$1,000,000; can receive supplemental funding over time
- **Length:** up to 5 years
- **Match:** N/A

BIL Funding → No cost share



TARGETED BROWNFIELDS ASSESSMENTS



- **Activities:** EPA provides **free** contractor assistance to perform Phase I/II site assessments and data evaluation
- **Application:** Open year-round, [online application](#)
- **Requirements:**
 - Must have a redevelopment in mind for property
 - Reuse must serve public good
 - Preferably in an underserved community



PROPOSAL PREPARATION SUPPORT



Center for Creative Land Recycling (CCLR)

- Will review draft proposals and provide valuable feedback
- Get proposals to them ASAP, reviews will be on a first come, first serve basis.
- Go to cclr.org or email your proposal in Word doc format to MARCreview@cclr.org
- Subject line:
APPLICANT_STATE_GRANT TYPE_Review Request





THANK YOU!

Set up a 1:1 Meeting by scanning the QR code below.

